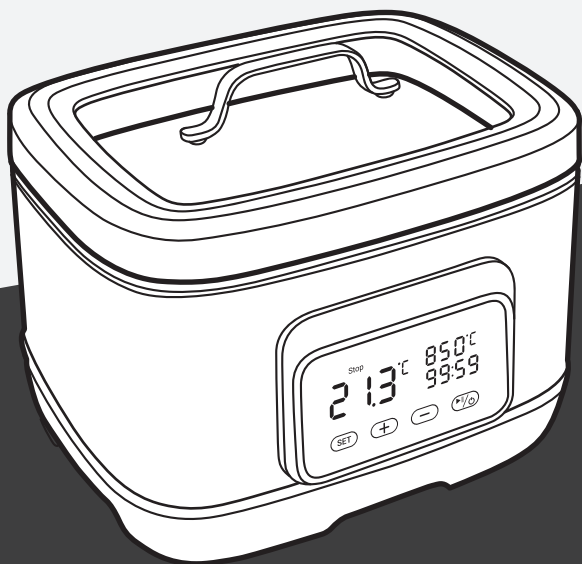


# INKBIRD



**ISV-500W**

## **SOUS VIDE COOKER**

U S E R   M A N U A L



### ***Warm tips***

- To quickly jump to a specific chapter page, click on the relevant text on the contents page.
- You can also use the thumbnail or document outline in the top left corner to quickly find a specific page.

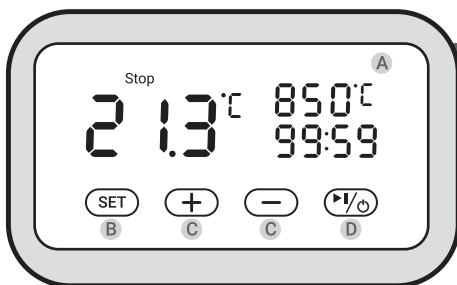
# CONTENTS



<b>01</b>	<i>Introduction</i>	01
<b>02</b>	<i>Basic Operation</i>	02
<b>03</b>	<i>Settings</i>	02
<b>04</b>	<i>Wi-Fi Connection</i>	04
<b>05</b>	<i>Important Safeguards</i>	06
<b>06</b>	<i>Warranty</i>	08



# ❖ 01/ Introduction



## 1.1 Product Details

- A LED Screen
- B Set Button
- C Adjustment Button
- D Run/Stop Button

## 1.2 Specifications

- Length of the Cable: **1.2m/47.2"**
- Temperature Control Range: **25°C~90°C(77°F~194°F)**
- Temperature Control Accuracy: **0.1°C(1°F)**
- Temperature Display Accuracy: **0.1°C(1°F)**
- Time Setting Range: **Max 99 hours and 59 minutes**
- Time Setting Minimum Interval: **1 minute**
- Reminder: **There will be a beep when the target temperature and temperature target time are reached.**
- Water Shortage Protection: **When the water level is lower than the minimum water level, it will stop working and sound an audible alarm.**
- Waterproof Level: **Non water-proof**
- Heating Power: **700W**
- Input voltage: **(US)AC 120V,60Hz,(EU,UK,AU)AC220~240V 50Hz**

## 02/ Basic Operation

1. Fill the container with water.
2. Turn on the INKBIRD ISV-500W.
3. Set the temperature and the time for your food.
4. Place your food in an airtight bag and squeeze out the air, then place the bag in water when it is at the right temperature. After placing the bag, the water level should be within the Max Fill Line and the Min Fill Line.
5. INKBIRD ISV-500W will alert you when the cooking is done.

Note: Please make sure that the food is completely underwater.

## 03/ Settings

### 3.1 Settings of Temperature and Timer

1. Press the SET button to enter main interface setting mode.
2. When the set temperature icon is flashing, you can adjust the value by pressing the “-” button or the “+” button.
3. Press the SET button again to set the hours of the timer, and press the SET button again to set the minutes.

Note: Long press the “+” button or the “-” button will quickly increase or decrease the temperature value.


### 3.2 How to Calibrate

1. Press and hold the “-” button to enter the calibration interface.
2. Press the SET button to select “Calibrate”.
3. Press the “-” button or “+” button to calibrate the temperature.
4. Press and hold the SET button for a few seconds to return to the main menu.

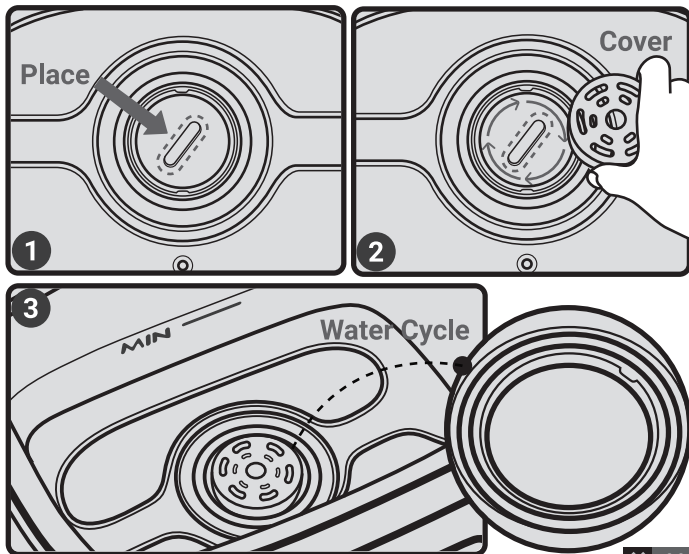
### 3.3 Switch between Celsius and Fahrenheit

1. Press and hold the “-” button to enter the temperature setting interface.
2. Press the SET button to choose the temperature unit.
3. Press the “-” button or “+” button to choose between Celsius and Fahrenheit units.

### 3.4 Start/Stop Cooking

Press the  button to start or stop cooking. You can check the working state in the upper left corner of the screen.

### 3.5 How to Magnetic-driven Water Circulation



## ❖ 04/ Wi-Fi Connection



INKBIRD APP

### 4.1 App Installation

Get the INKBIRD app from Google Play or App Store to download the preferred app for free, or you can scan the QR code to download the preferred app directly.

### 4.2.1 Connect to your phone

1. Register before using the INKBIRD app. Select your Country/Region, enter your e-mail, then a verification code will be sent to your email, enter it to confirm your identity, and the registration is complete.
2. Open the app and click “+” to start the connection.
3. Turn on the INKBIRD ISV-500 and check if the Wi-Fi icon is blinking rapidly. If yes, confirm on your app. Then, enter your Wi-Fi password to connect to the wireless network, and click OK to connect the device.
4. Connection succeed.

**Note:** If you have registered an account before, just log in directly.

### 4.2.2 Connect the device in AP mode

If the device is not connected to your phone, the Wi-Fi icon flashes rapidly by default.

Press and hold the “+” button for a few seconds to switch to AP mode. The Wi-Fi icon flashes slowly in AP mode.

1. Open the app and click “+” to start the connection.
2. Turn on the INKBIRD ISV-500, select it on the app, and click “AP Mode”

in the upper right corner. Check if the Wi-Fi icon is blinking slowly, if so, confirm on your app, then enter your Wi-Fi password to connect to the wireless network, click OK to connect the device.

3. The app will jump to the WLAN Setting interface, select the "SmartLife-XXXX" to connect to the router without entering the password. Go back to the app and enter the automatic connection interface to click "Done".

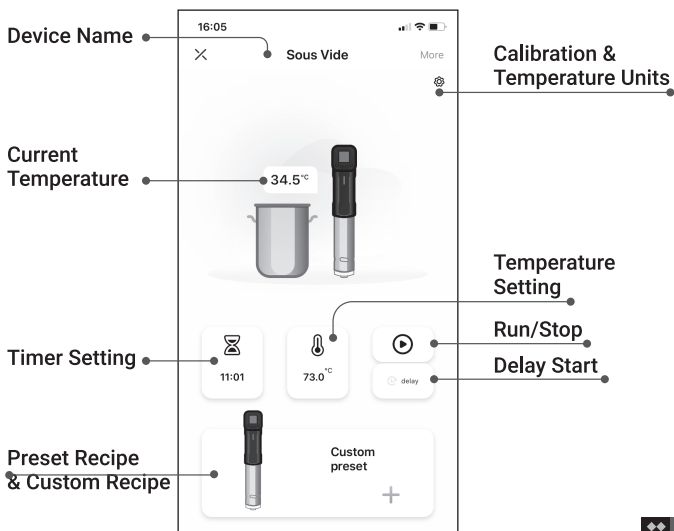
4. Connection succeed.

### 4.3 Wi-Fi Reset

Press and hold the "+" button for 5 seconds to reset the Wi-Fi, then repeat the above steps to connect the phone.

The device only supports 2.4GHz Wi-Fi routers.

### 4.4 Operation Interface on INKBIRD APP





You could control the Sous Vide with INKBIRD app on your phone at anytime anywhere.

All functions are available on the app.

## 4.5 INKBIRD ISV-500W supports multiple users on a single device

Please follow the steps below for a successful operation:

1. Tap Me to enter the interface.
2. Tap Home Management > owned > Add members, you will then have the chance to invite another user.
3. New users will have to download the INKBIRD App on their phones and create a account.
4. Enter the account number of your friend or family member and set the user as an administrator.
5. Back to main interface, the administrator could check your device and their owns by clicking the left top corner. They could also check the working status of your device, set a temperature or a timer and do some other adjustments to your device.

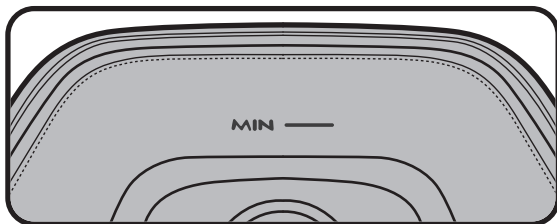
**Note: Not more than 100 people can control the sous vide at once.**

## ❖❖ 05/ Important Safeguards

When using an electrical appliance, basic safety precautions should always be followed, including the following:

1. Read all instructions.
2. The water level should not exceed the"MAX"scale line of the stainless steel part.
- 3.The minimum water level should not be lower than the MIN shown below.
4. Do not touch hot surfaces.Use handles or knobs.
5. To protect against electrical shock do not immerse cord,plugs,or (state specific part or parts in question) in water or other liquid.
6. Close supervision is necessary when any appliance is used by or near children.
7. Unplug from outlet when not in use and before cleaning.Allow to cool before putting on or taking off parts.

8. Do not operate any appliance with a damaged cord or plug or after the appliance malfunctions or has been damaged in any manner. Return appliance to the nearest authorized service facility for examination, repair, or adjustment.
9. The use of accessory attachments not recommended by the appliance manufacturer may cause injuries.
10. Do not use outdoors (this item may be omitted if the product is specifically intended for outdoor use).
11. Do not let cord hang over edge of table or counter, or touch hot Surfaces.
12. Do not place on or near a hot gas or electric burner, or in a heated oven.
13. Extreme caution must be used when moving an appliance containing hot oil or other hot liquids.
14. Always attach plug to appliance first, then plug cord into the wall outlet. To disconnect, turn any control to "off", then remove plug from wall outlet.
15. Do not use appliance for other than intended use.
16. Intended for countertop use only
17. **WARNING:** Spilled food can cause serious burns. Keep appliance and cord away from children. Never drape cord over edge of counter, never use outlet below counter, and never use with an extension cord.
18. A short power-supply cord is used to reduce the risk resulting from it being grabbed by children, becoming entangled in, or tripping over a longer cord.
19. Household use only
20. Do not immerse in water
21. This appliance has a polarized plug (one blade is wider than the other). To reduce the risk of electric shock, this plug is intended to fit into a polarized outlet only one way. If the plug does not fit fully into the outlet, reverse the plug. If it still does not fit, contact a qualified electrician. Do not attempt to modify the plug in any way.



## 06/ Warranty

**This Limited Warranty applies only to INKBIRD Sous Vide.**

### • *What is Covered and for How Long*

INKBIRD warrants that all new products are free from defects in manufacturing, materials and workmanship for a period of one year from date of retail purchase.

### • *What this Warranty Does not Cover*

The warranty does not cover defects or malfunction caused by misuse, abuse or improper maintenance, failure to follow operating instructions, or use with equipment with which it is not intended to be used.

Also, the warranty will not apply to damage caused by unauthorized alteration, modification or repair of the product. INKBIRD does not warrant or provide service or support for any third party products, including, but not limited to iPhones and Android Phones.

### • *How to Obtain Warranty Service*

To obtain warranty service for products purchased from a third-party, retail or directly from INKBIRD you must return the product with proof of purchase using the following procedures:

1. Contact INKBIRD Customer Support for specific return and shipping instructions by email.

Email Address: [support@inkbird.com](mailto:support@inkbird.com).

You may be asked to complete a warranty service request form. And to help ensure warranty claims are for INKBIRD products, our technical support department may also require you to email a copy of your purchase receipt to us.

2. Label and ship the product, freight prepaid, to the address provided by INKBIRD.

### • *Exclusions and Limitations*

THIS WARRANTY IS YOUR EXCLUSIVE WARRANTY AND REPLACES ALL OTHER WARRANTIES OR CONDITIONS, EXPRESS OR IMPLIED, INCLUDING, BUT NOT LIMITED TO, ANY IMPLIED WARRANTIES OR CONDITIONS OF MERCHANTABILITY OR FITNESS FOR A PARTICULAR PURPOSE.

AS SOME STATES OR JURISDICTIONS DO NOT ALLOW THE EXCLUSION OF EXPRESS OR IMPLIED WARRANTIES, THE ABOVE EXCLUSION MAY NOT APPLY TO YOU.

IN THAT EVENT, SUCH WARRANTIES APPLY ONLY TO THE EXTENT AND FOR SUCH DURATION AS REQUIRED BY LAW AND ARE LIMITED IN DURATION TO THE WARRANTY PERIOD.

## FCC Requirement

changes or modifications not expressly approved by the party responsible for compliance could void the user's authority to operate the equipment.

This device complies with Part 15 of the FCC Rules. Operation is subject to the following two conditions:

- (1) this device may not cause harmful interference, and
- (2) this device must accept any interference received, including interference that may cause undesired operation.

Note: This equipment has been tested and found to comply with the limits for a Class B digital device, pursuant to Part 15 of the FCC Rules. These limits are designed to provide reasonable protection against harmful interference in a residential installation. This equipment generates, uses, and can radiate radio frequency energy, and if not installed and used in accordance with the instructions, may cause harmful interference to radio communications. However, there is no guarantee that interference will not occur in a particular installation. If this equipment does cause harmful interference to radio or television reception, which can be determined by turning the equipment off and on, the user is encouraged to try to correct the interference by one or more of the following measures:

- Reorient or relocate the receiving antenna.
- Increase the separation between the equipment and receiver.
- Connect the equipment into an outlet on a circuit different from that to which the receiver is connected.
- Consult the dealer or an experienced radio/TV technician for help.

This equipment complies with FCC radiation exposure limits set forth for an uncontrolled environment. This equipment should be installed and operated with a minimum distance of 20cm between the radiator & your body. This transmitter must not be co-located or operating in conjunction with any other antenna or transmitter.

## INKBIRD APP



## INKBIRD TECH.C.L.

[Support@inkbird.com](mailto:Support@inkbird.com)

**Factory address:** 6th Floor, Building 713, Pengji  
Liantang Industrial Area, NO.2 Pengxing Road,  
Luohu District, Shenzhen, China

**Office address:** Room 1803, Guowei Building,  
NO.68 Guowei Road, Xianhu Community, Liantang,  
Luohu District, Shenzhen, China

