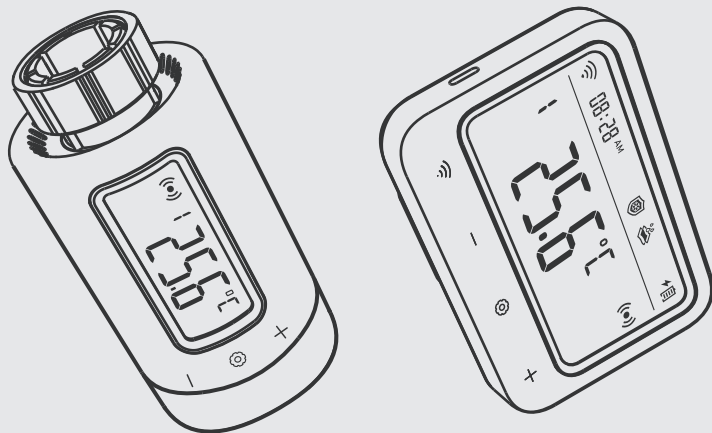


# INKBIRD

## ***SMART RADIATOR CONTROL VALVE***

### USER MANUAL



IRC-RW1

***Scan to download***



Please keep this manual properly for reference. You can also scan the QR code below to visit our official website for product usage videos. For any usage issues, please feel free to contact us at [support@inkbird.com](mailto:support@inkbird.com).



### ***Warm tips***

- To quickly jump to a specific chapter page, click on the relevant text on the contents page.
- You can also use the thumbnail or document outline in the top left corner to quickly find a specific page.

# CONTENTS

<b>01</b>	<b>Overview</b>	01
<b>02</b>	<b>Safety Instruction</b>	01
<b>03</b>	<b>Technical Specifications</b>	02
<b>04</b>	<b>Package Contents</b>	03
<b>05</b>	<b>Product Diagram</b>	04
<b>06</b>	<b>Operation Instructions</b>	06
<b>07</b>	<b>Get Start</b>	07
<b>08</b>	<b>Instruction for First-Time Use of the INKBIRD APP</b>	11
<b>09</b>	<b>How to Pair the Gateway with the APP</b>	12
<b>10</b>	<b>Main Interface of INKBIRD APP</b>	15
<b>11</b>	<b>Parameter Setting</b>	20
<b>12</b>	<b>Troubleshooting Guide</b>	23
<b>13</b>	<b>Precautions For Use</b>	24
<b>14</b>	<b>Customer Service</b>	24

## **01 Overview**

INKBIRD smart radiator control valve helps you precisely detect radiator temperature and efficiently controls it in the desired temperature range. By sequentially linking the control valve, Wi-Fi Gateway, and smartphone, you can freely control the smart radiator control valve via your smartphone anytime, anywhere, including the remote setting of air temperature and checking temperature history. This control valve features multiple protective functions like anti-frost, anti-limescale, and vacation mode. It's an efficient product with power conservation and emission reduction, saving heating bills in winter and keeping your home warm and comfortable even in cold winters.

## **02 Safety Instruction**

- As with all electronic products, this device should be placed out of the reach of children.
- Do not use this product in areas where electronic products are prohibited.
- Protect this product from dust, moisture, and excessive heat. Use only in dry rooms.
- Do not use this product in a wet environment to avoid splashing water.
- Do not subject this product to any violent impact.
- To prevent suffocation, keep the packaging material out of the reach of children.
- Do not bend or press the power cord.
- If the device is damaged, do not turn it on or continue to operate it.
- Do not attempt to service or repair this device by yourself.

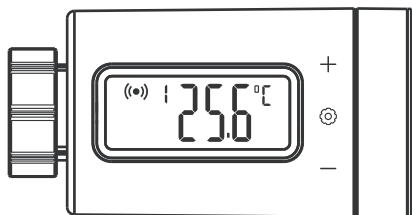
### 03 Technical Specifications

<i>Product Model</i>	<i>IRC-RW1</i>
<i>Screen</i>	<i>LCD Screen; The screen on the control valve features a manual rotation function for easy viewing.</i>
<i>Power Source</i>	<i>Wi-Fi Gateway: powered by lithium battery, DC5V, 1A ; Control Valve: 2*AA dry batteries (not included)</i>
<i>Temperature Heating Range</i>	<i>0.0°C~35.0°C</i>
<i>High Temperature Alarm Range</i>	<i>-10-50°C</i>
<i>Low Temperature Alarm Range</i>	<i>-10-50°C</i>
<i>Calibration Range</i>	<i>-4.9°C~4.9°C</i>
<i>Time Setting Range</i>	<i>00:00~23:59</i>
<i>Maximum Time Period Can Be Set</i>	<i>11</i>
<i>Maximum Number of Connectable Devices</i>	<i>Up to 5 control valves can be connected and controlled by a smartphone connected to the gateway.</i>
<i>Low Power Prompt</i>	<i>Reminds the user to replace batteries when the battery power of the control valve is too low.</i>
<i>Wi-Fi Gateway Dimension</i>	<i>110*80*48.7mm</i>
<i>Control Valve Dimension</i>	<i>Ø 57*110.9mm</i>
<i>Warranty Period</i>	<i>2 Years</i>
<i>Connection Range</i>	<i>Up to 180 meters of communication distance between the Wi-Fi gateway and the control valve</i>

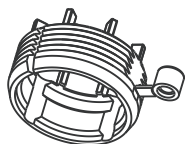
## 04 Package Contents



*Wi-Fi Gateway*



*Control Valve*



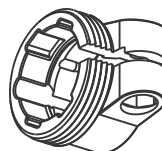
*RAVL Connector*



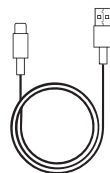
*RAV Connector*



*Round Ring*

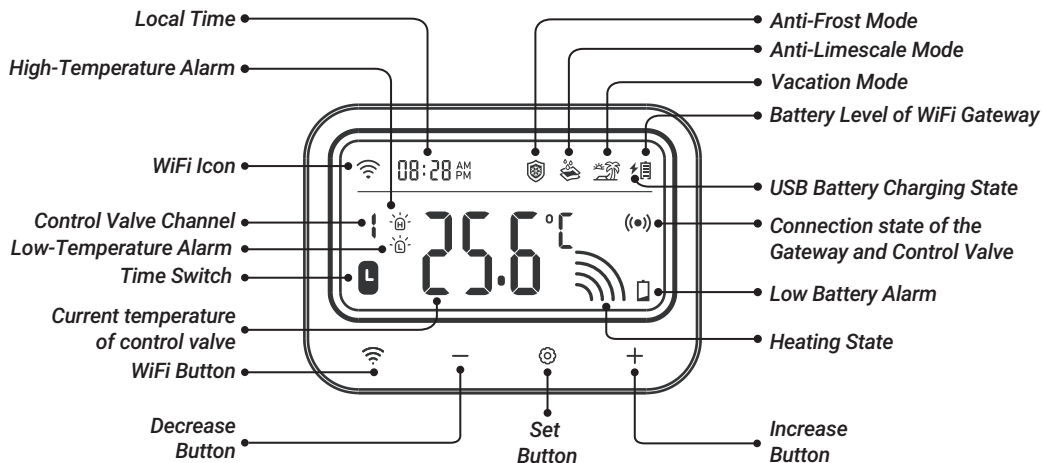


*RA Connector*

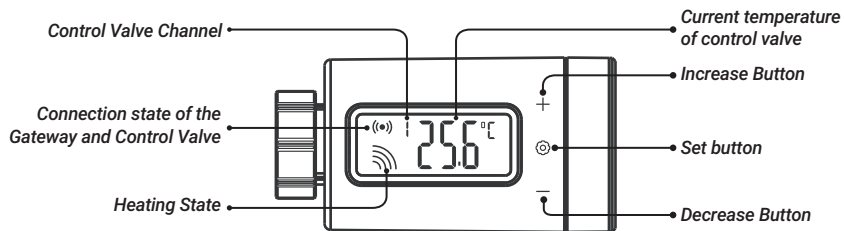


*Type-c USB cable*

## 05 Product Diagram

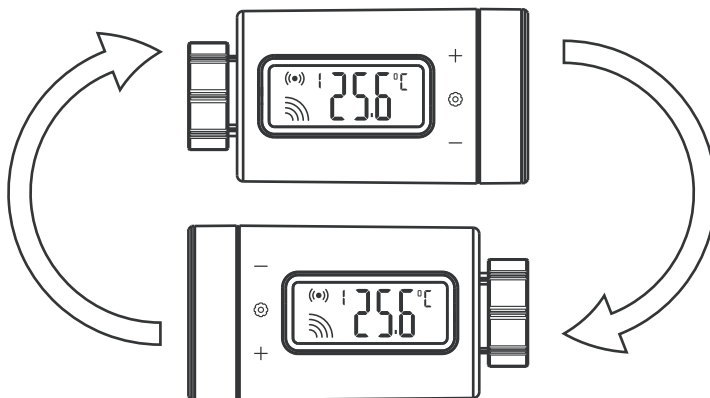




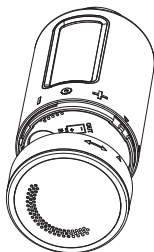


## Manually screen rotation function

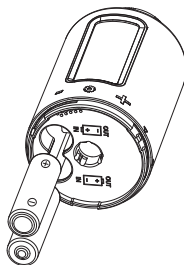
For easy viewing, short press the + key to rotate the screen 180 degrees.



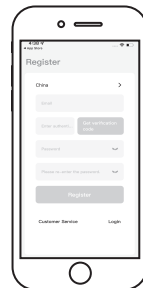
## 06 Operation Instructions



Check if the control valve is compatible with the radiator



Install battery in the control valve



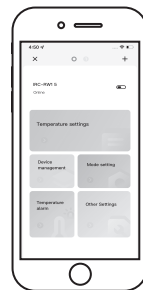
Download and register the app



Add the gateway device to the app



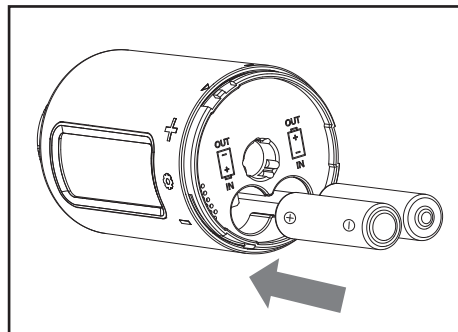
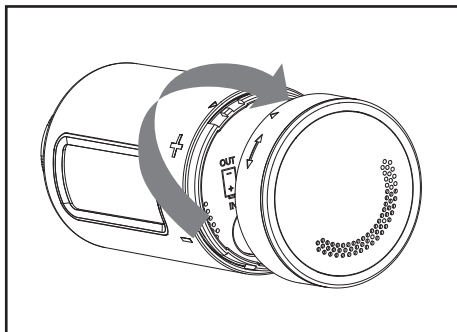
Check if the control valve is paired with the gateway



Complete installation and start customizing the parameters.

## 07 Get Start

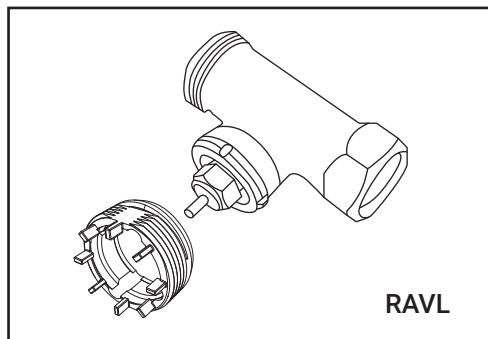
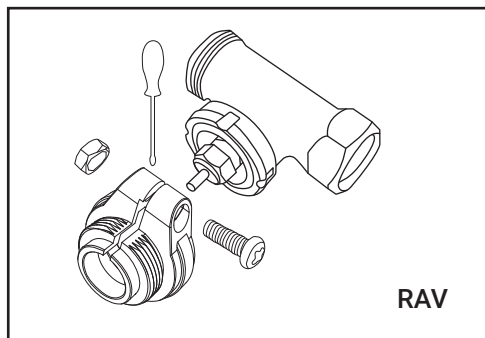
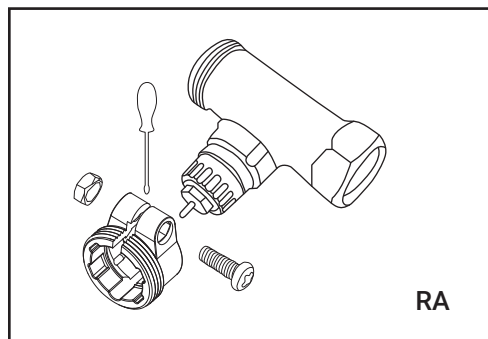
### 7.1 Battery Installation



#### **Battery Precautions:**

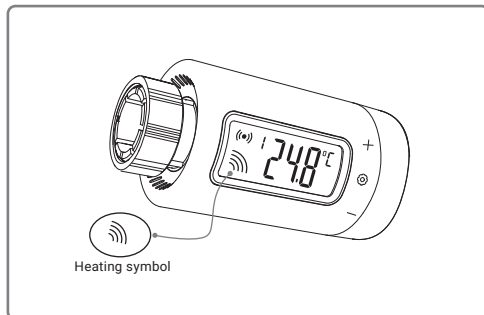
- Make sure the polarity is correct when installing the batteries.
- If you are not going to use the device for a long time, please remove the battery from the device to avoid the risk of leakage.
- Please keep the battery out of the reach of children to prevent accidental ingestion and burns. Do not recharge spent batteries or try to reactivate them by heating or any other means. Do not short-circuit the battery. If you accidentally swallow a cell or battery, please seek medical attention immediately.

## 7.2 Control Valve Installation

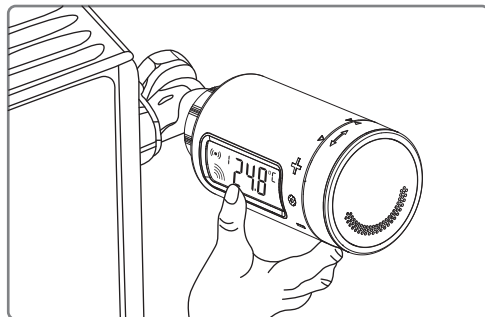


7.2.1: Choose a connector for your radiator from the included connectors, RA type, RAV type, and RAVL type.

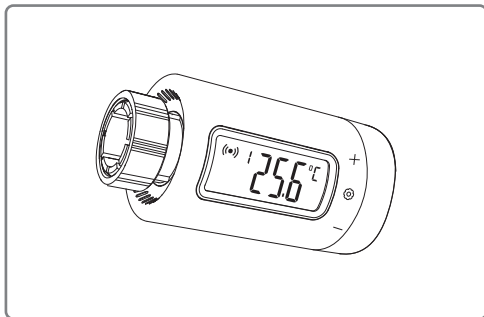
### 7.2.2: Install it on the control valve.



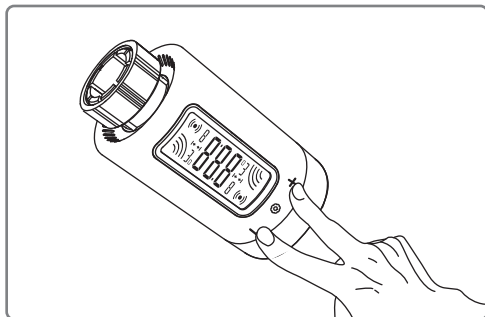
After installing the battery, if the control valve is in the heating-on state.



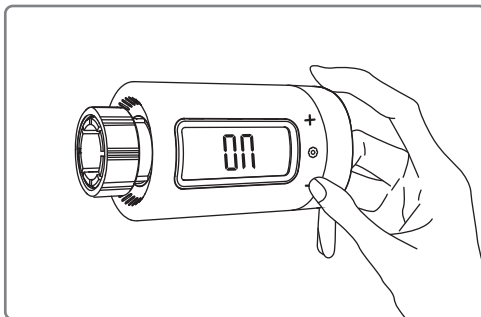
it can be installed directly on the radiator.



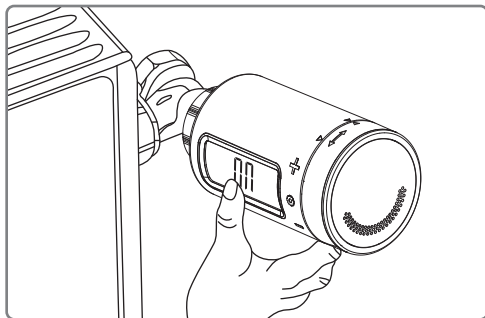
Otherwise, if the control valve is in the heating-off state, it should be installed according to the following steps.



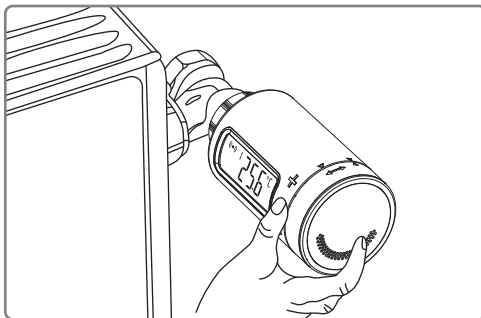
Step1: Long-press the + and – buttons for 2 seconds to enter the installation mode.



Step2: Press the – button: the LCD shows 0n, and the nut cap is sucked into place.



Step3: The installation begins.



Step4: After installation, press and hold the @ button for 2 seconds to exit the installation mode.

## **08** *Instruction for First-Time Use of the INKBIRD APP*

### **8.1** *How to Download the INKBIRD APP*



Search "INKBIRD" in the App Store or Google Play or scan the QR code to download and install the INKBIRD application. Open the App, complete registration, and log in, then follow the app operation prompts to connect the gateway.

#### **NOTES:**

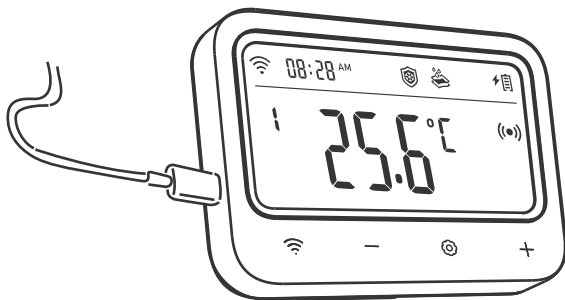
- Your iOS devices must be running iOS 12.0 or above to download the app smoothly.
- Your android devices must be running android 7.1 or above to download the app smoothly.
- The device supports a 2.4GHz Wi-Fi router only.

### **8.2** *Registration*

Step1: Open the app, select your Country/Region, and a verification code will be sent to you.


Step2: Enter the verification code to confirm your identity, and the registration is complete.

## 09 How to Pair the Gateway with the APP



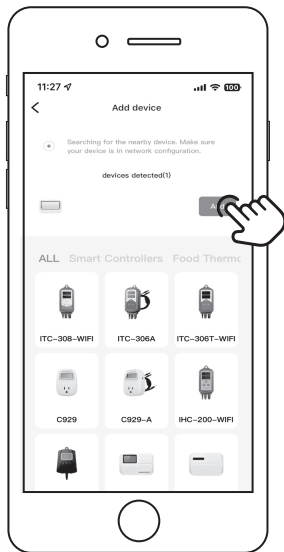
**Step1:** Plug the USB power connector directly into Gateway and keep it constantly connected when using.



**Step2:** Press and hold the  button until the icon quickly flashes to enter pairing mode.

**Note:** Please make sure your phone has Bluetooth enabled and keep the Gateway as close as possible to your router and smartphone.

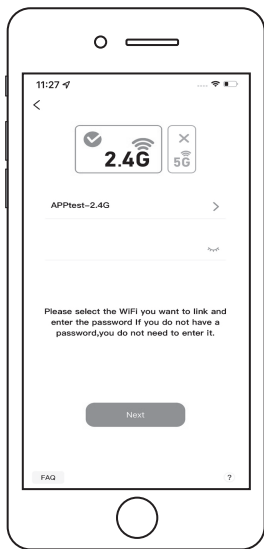




**Step3:** Open the INKBIRD app and click "Add" in the right corner. Add the IRC-RW1 after automatically searching the device.



**Note:** If the IRC-RW1 cannot be found automatically, please manually select the device model and follow the prompts to complete the connection.



**Step4:** Choose a WiFi network and connect it, enter the password, then click Next Step.



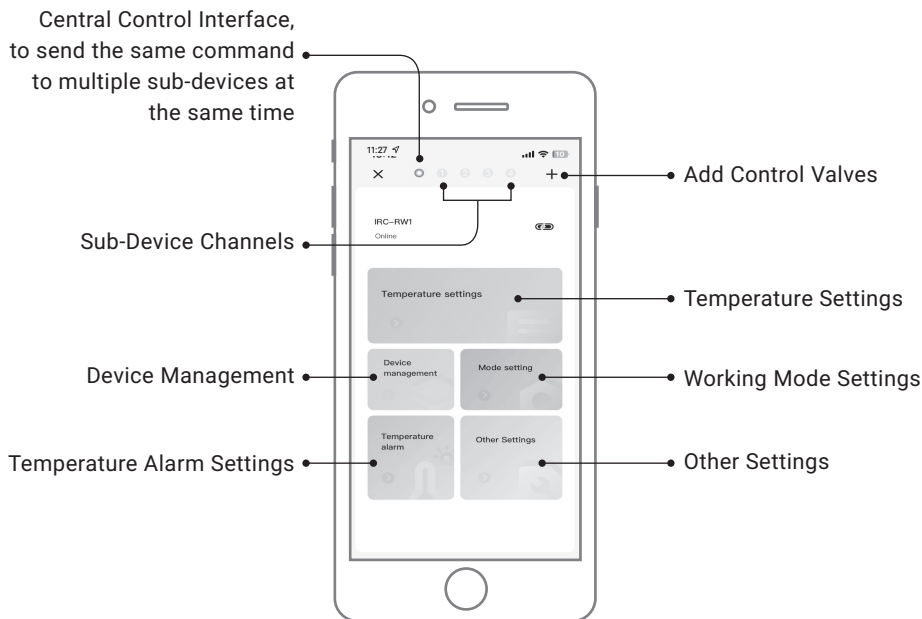
**Step5:** The device is automatically pairing with your smartphone.



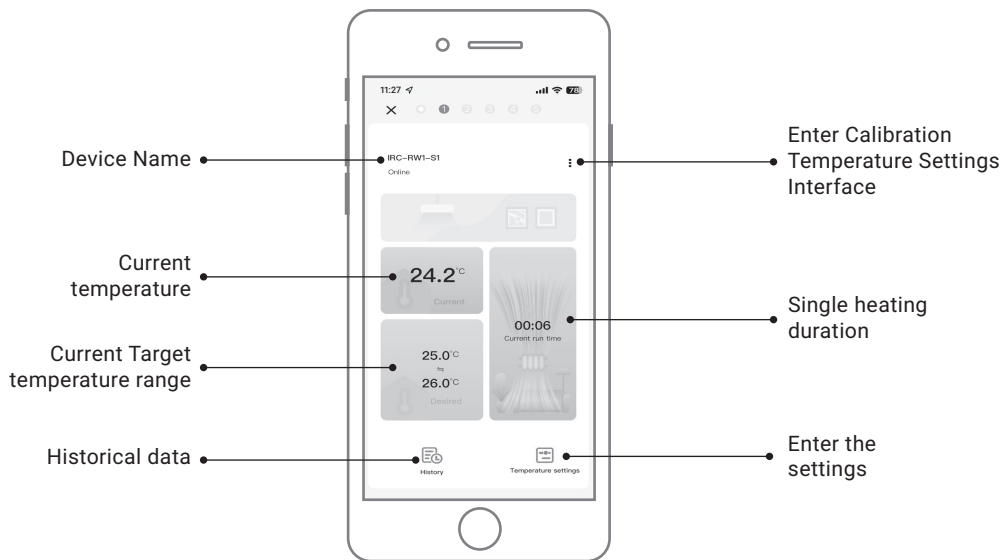
**Step6:** Pairing is successful.

## 10 Main Interface of INKBIRD APP

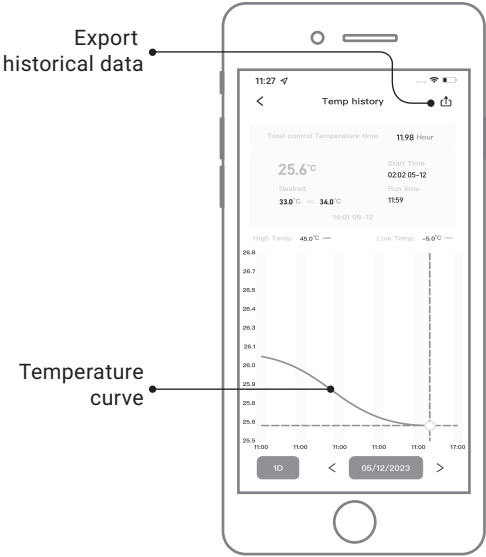
### 10.1 The gateway control interface can set multiple control valves at the same time.



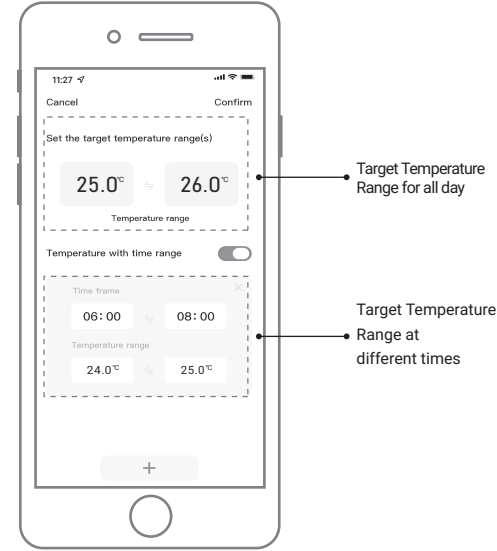
## 10.2 Control Valve Interface



### 10.3 History Graph Interface

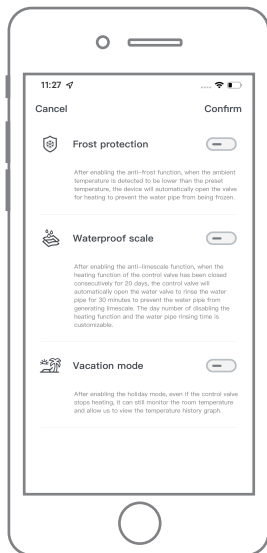


### 10.4 Control Valve Setting Interface

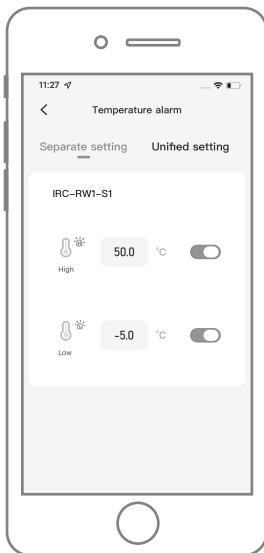


Temperature Setting Interface

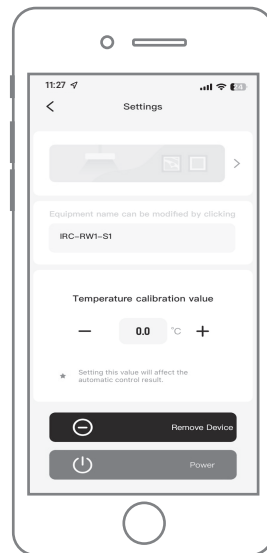
## 10.4 Control Valve Setting Interface



Mode Setting Interface

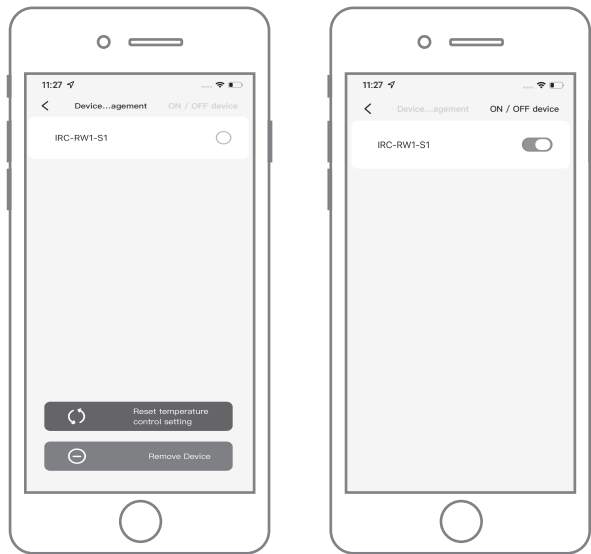


High/Low-Temperature  
Alarm Setting Interface

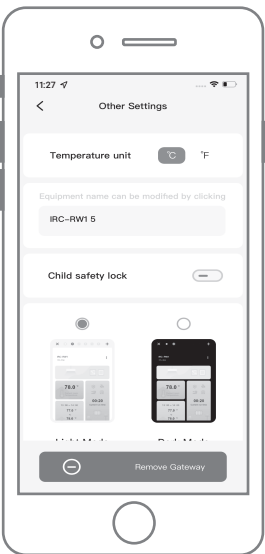


Calibration Temperature  
Settings Interface

# 10.4 Control Valve Setting Interface



Device Management Interface



Other Setting Interface

## **11 Parameter Setting**

### **11.1 Parameter Setting Range**

<b>Code</b>	<b>Function</b>	<b>Default Setting</b>	<b>Setting Range</b>
ST	Start Heating Temperature	25.0°C	0.0°C~35.0°C
SP	Stop Heating Temperature	26.0°C	0.0°C~35.0°C
ST1...ST11	Start Heating Time	00:00	00:00~23:59
SP1...SP11	Stop Heating Time	00:00	00:00~23:59
AH	High-Temperature Alarm Value	45.0°C	-10-50°C
AL	Low-Temperature Alarm Value	-5.0°C	-10-50°C
CA	Temperature Calibration Value	0.0°C	-4.9°C~4.9°C
CF	Temperature Unit	C	C/F

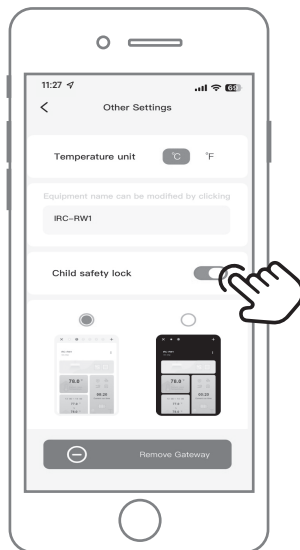
**Note:** The minimum setting differential value of ST and SP is 0.3°C.

### **11.2 Working Principle**

The valve will close to stop heating when the current temperature reaches the SP(stop heating temperature) and will open to start heating when it reaches the ST(start heating temperature).

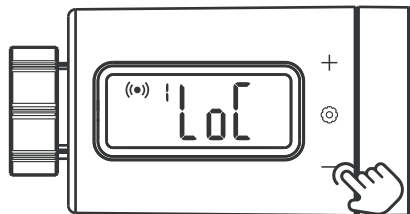


## 11.3 Child Safety Lock Function



### How to enable the child safety lock?

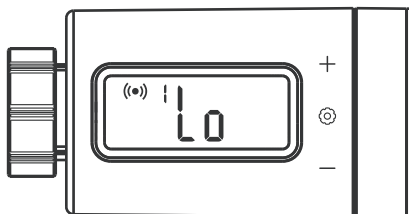
When the child safety lock is enabled on App, pressing any button will immediately display the LoC character, and the buzzer will sound three times.



### How to unlock the child safety lock on the Gateway or Control Valve ?

Press and hold the — button for 2 seconds to unlock the child safety lock on Gateway or Control Valve. If no button is pressed within 60 seconds, the function reverts to the locked state.

## 11.4 Low Battery Alarm Function



When the battery power is too low, the control valve will automatically be closed, and the character "Lo" will be displayed. At the same time, all action keys are disabled and the App sends you a low-battery notification. When the battery power is low, we strongly recommend replacing the battery immediately so as not to affect its normal work.

## **12** ***Troubleshooting Guide***

### **1) What should you do if the connection between the WiFi gateway and the control valve is abnormal?**

a. Remove the control valve from the App and add it again.

### **2) The WiFi network is often dropped, historical data is lost, or the network cannot be connected?**

a. Make sure the WiFi signal is stable, and place the device as close to the router as possible.

b. Make sure there are as few barriers as possible between the device and the router.

c. Check to see if the battery level is low.

d. Enable Bluetooth and positioning functions, allow the App to obtain location information, and allow the local network (iOS System).

### **3) The alarm notification is not received or delayed?**

a. Make sure the WiFi signal is stable, and place the device as close to the router as possible.

b. Make sure there are as few barriers as possible between the device and the router.

c. Check to see if the app notification permission is enabled.

## **13** *Precautions For Use*

1. Please do not disassemble the product if you are not a professional.
2. Use a slightly damp, lint-free cloth to clean the product. Do not use corrosive cleansers

## **14** *Customer Service*

This item carries a 2-year warranty against defects in either components or workmanship. During this period, products that prove to be defective will, at the discretion of INKBIRD, be either repaired or replaced without charge. For any problems in use, please feel free to contact us at [support@inkbird.com](mailto:support@inkbird.com). We will do our best to help you.



This product also supports setting parameters on the gateway and control valve. For detailed setting instruction, please scan the QR code.

## INKBIRD TECH.C.L.

support@inkbird.com

**Factory address:** 6th Floor, Building 713, Pengji Liantang  
Industrial Area, NO.2 Pengxing Road, Luohu District,  
Shenzhen, China

**Office address:** Room 1803, Guowei Building, NO.68  
Guowei Road, Xianhu Community, Liantang, Luohu District,  
Shenzhen, China



V1.0

MADE IN CHINA