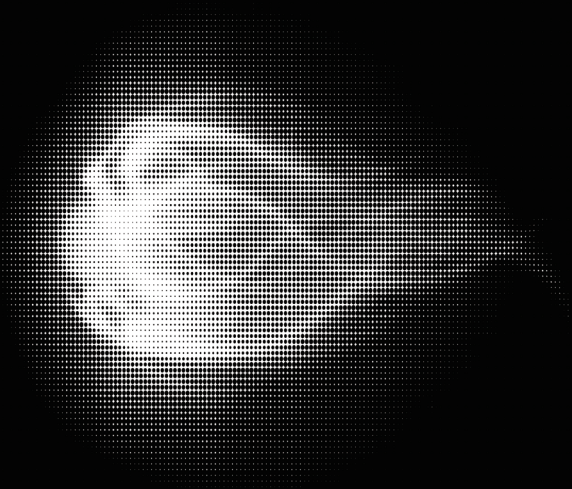


INKBIRD

BBQ

INT-11P-B/INT-11S-B
USER MANUAL

THERMOMETER





*Please keep this manual properly for reference. You can also scan the QR code to visit our official website for product usage videos. For any usage issues, please feel free to contact us at **support@inkbird.com**.*

Wenn Sie eine Bedienungsanleitung in deutscher Sprache benötigen, scannen Sie bitte den QR-Code und besuchen Sie unsere Website, um sie zu erhalten und ein Video über die Verwendung des Produkts zu sehen.

Se avete bisogno di un manuale di istruzioni in italiano, scansionate il codice QR e visitate il nostro sito web per ottenerlo e vedere un video su come utilizzare il prodotto.

Si vous avez besoin d'un mode d'emploi en français, veuillez scanner le code QR pour visiter notre site officiel afin d'obtenir et de visionner la vidéo d'utilisation du produit !

Als je een Nederlandstalige handleiding nodig hebt, scan dan de QR-code om naar onze officiële website te gaan en bekijk de video over het gebruik van het product!

Si necesita el manual de instrucciones en español, escanee el código QR para ir a nuestro sitio web oficial y ver el vídeo sobre cómo utilizar el producto.

● **Please read this instruction manual before use.**

Please read this manual thoroughly before using the INT-11P-B/INT-11S-B. Use in violation of this manual may result in product damage, property damage, or personal injury.

● **Reference Table for Minimum Internal Temperature of Food Safety (USDA Database)**

Food	Type	Internal Temperature (°F)
Beef,bison, veal, goat, and lamb	Steaks, roasts, chops	145 Rest time: 3 minutes
	Ground meat and sausage	160
Casseroles	Meat and meatless	165
Chicken,turkey, and other poultry	All: whole bird, breasts, legs, thighs, wings, ground poultry, giblets, sausage, and stuffing inside poultry	165
Eggs	Raw eggs	Cook until yolk and white are firm
	Egg dishes (such as frittata quiche)	160
	Casseroles (containing meat and poultry)	165
Ham	Raw ham	145 Rest time: 3 minutes
	Precooked ham (to reheat)	165 Note: Reheat cooked hams packaged in USDA-inspected plants to 140°F
Leftovers	Any type	165
Pork	Steaks, roasts, chops	145 Rest time: 3 minutes
	Ground meat and sausage	160
Rabbit and venison	Wild or farm-raised	160
Seafood	Fish (whole or filet) such as salmon, tuna, tilapia, pollock bass, cod, catfish, trout,etc	145 or cook until flesh is no longer translucent and separates easily with a fork
	Shrimp, lobster, crab, and scallops	Cook until flesh is pearly or white, and opaque
	Clams, oysters, mussels	Cook until shells open during cooking



Warm tips

- To quickly jump to a specific chapter page, click on the relevant text on the contents page.
- You can also use the thumbnail or document outline in the top left corner to quickly find a specific page.

CONTENTS

01 Overview	01
02 Technical Specifications	01
03 Product Diagram	02
04 Key Definition	04
05 Battery Details & Maintenance	04
06 Operation Instructions	06
07 APP Installation & Connection	07
08 Cleaning and Maintenance	08
09 Important Notes/Warnings	09
10 Troubleshooting Guide	10
11 FCC Requirement	11
12 IC Warning	12



Overview

INKBIRD INT-11P-B/INT-11S-B is a truly wireless and intelligent BBQ thermometer that adopts a Bluetooth connectivity, allowing you to eliminate the shackles of the wired probes and remotely monitor food temperatures more conveniently. It helps you accurately measure the internal temperature of food in grilling, smoking, and cooking, reducing the waste of energy and food resources and preventing food-borne diseases; no more worries about overcooking and undercooking. When using it, you only need to insert the probe into the food, connect the smartphone App, select the desired food temperature and doneness, and then you can rest and wait for the cooking to be complete. It will remind you when to enjoy this delicious food.

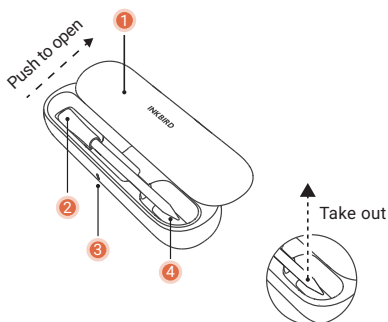


Technical Specifications

Brand	INKBIRD
Model	INT-11P-B/INT-11S-B
Connection Method	INT-11P-B: BLE 5.1
	INT-11S-B: BLE 5.4
Bluetooth Connection Distance	300ft/91m (without obstacles, for reference only)
Probe Waterproof Rating	IP67 (dishwasher safe)
Sensor Number	INT-11P-B Probe: 1 high precision food temperature sensor with 1 ambient temperature sensor
	INT-11S-B Probe: 4 high precision food temperature sensors with 1 ambient temperature sensor
Probe Measurement Accuracy	INT-11P-B: $\pm 1^{\circ}\text{C}/\pm 1.8^{\circ}\text{F}$
	INT-11S-B: $\pm 0.3^{\circ}\text{C}/0.5^{\circ}\text{F}$
Temperature Measurement Range	Food Temperature: $-10\sim 100^{\circ}\text{C}/14\sim 212^{\circ}\text{F}$ Ambient Temperature: $0\sim 300^{\circ}\text{C}/32\sim 572^{\circ}\text{F}$
Probe Battery Life	25 hours
Probe Battery Voltage	3.8V
Probe Charging Time	25min for fully charged
Battery Capacity of Charging Case	500mAh lithium-ion battery
Battery Voltage of Charging Case	3.7V
Package Contents	Charging Case *1 Wireless Probe*1 USB-C Charging Cable*1 User Manual*1

03 Product Diagram

• Product Appearance

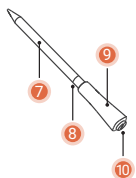
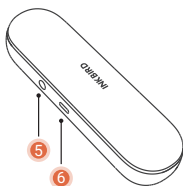


• Probe Charging Case

- ① Top Cover (Push to open)
- ② Probe Charging Dock
- ③ Indicator Light
- ④ Take out the probe

• Probe Charging Case

- ⑤ Operation Button
- ⑥ Type-C Charging Port



• Probe

- ⑦ Food-grade Stainless Steel
- ⑧ Safe Cooking Line
- ⑨ Ceramic Handle
- ⑩ Charging Contact Point

● Indicator Light Reference Table

Probe	Low Battery	<ul style="list-style-type: none"> When the probe battery level is less than 10%, the indicator light on the charging case will flash red, prompting that you should stop cooking within 1 hour and put the probe back into the charging case for charging. The probe will stop working and the indicator light will go out after the battery is exhausted.
	Battery Charging	The indicator light flashes green at the breathing rate and will go out after the probe is fully charged.
	Remove the Probe	Take out the probe from the charging case, and the indicator light will change color to show the remaining battery power. It will go out in 3 seconds
	Pair the Probe	When the probe is pairing, the indicator light will flash alternately red and green. It will light green if the pairing is successful and red if the pairing fails. The indicator light then goes out.
Charging Case	Battery Level Display	<ul style="list-style-type: none"> 35~100%, Press the button and the indicator light will show green prompting that the battery is sufficient. 15~35%, Press the button and the indicator light will show yellow, prompting that the battery is insufficient. 10~15%, Press the button and the indicator light will show red, prompting that the battery is too low.
	Low Battery	<ul style="list-style-type: none"> When the battery level is less than 10%, the indicator light remains red to remind you to charge the device. When the battery is exhausted, the indicator will flash red for 5 seconds and then the device will switch off.
	Battery Charging	The indicator light flashes green at the breathing rate, remains lit after the case is fully charged, and turns off after the charging stops.



04 Key Definition

- Press the button on the charging case and the indicator light will illuminate to show the battery level. Please refer to the Indicator Light Reference Table in the previous section to understand the battery level.
- Press and hold for 30 seconds to reset the unit to factory defaults. (Forced reset)
- When the charging case is in an alarm condition, press the button to turn off the alarm sound.

NOTE:

1. Pressing the button cancels all alarms except high-temperature alarms. After a high-temperature alarm is triggered, you should immediately stop heating, move the unit to a shaded, cool place, and turn off the unit's operation in the app. Alternatively, the unit will automatically stop the alarm when it detects that the temperature has dropped to a safe level.
2. If your probe is unfortunately damaged and needs to be replaced, place the new probe into the charging case and press and hold the button on the charging case for 10 seconds to enter probe pairing mode. Follow the app instructions and the indicator light on the charging case will show the pairing status and result.



05 Battery Details & Maintenance

Battery Details

INKBIRD INT-11P-B/INT-11S-B contains a temperature probe and a charging case that can expand the Bluetooth connection range, issue alarms, and charge the probe.

- A fully charged probe can cook continuously for 25 hours. There is no need to worry that the battery will not last for the cooking time you need on any cooking occasion. (Consistently high temperatures can reduce battery life.)
- The charging case has a built-in 500mAh high-capacity lithium battery that lasts up to 8 days in a room temperature environment while charging the probe at the same time.

● Battery Charging Steps & Methods

● Probe

1. Put the probe that needs to be charged into the charging position of the case. When it starts charging, the device will emit a warning tone once.
2. The indicator light of the charging case will show green and flash at the breathing rate to remind you. The probe will be fully charged within about 25 minutes.

● Charging Case

1. Please use the charging cable included in the package to charge the case, and it will be fully charged within about 3 hours.
2. If you need to use another charging cable to charge this product, please choose a charging cable with a 5V 1A type-c interface.

● Use & Maintenance

1. Do not place or magnetically attach the charging case to any hot surface, such as a working stove, oven, smoker, etc. This may cause product damage or even personal injury.
2. Do not clean the charging case with running water or put it in a dishwasher or sink, as it may cause damage to the battery.
3. Do not store this product in extreme weather or high humidity environments as this may affect the battery life or cause damage to the battery.
4. If you turn on the device but leave it unused for a short time, it will automatically sleep or shut down to save power. But, if you are not going to use this product for a long time, please charge it to about 50% of the battery power to prevent the battery from entering a deep discharge state. However, it should not be fully charged before storage, as it may shorten the battery life.
5. Please do not disassemble or replace the internal battery by yourself.

6. When the battery level of the device is too low, the temperature measurement results may be incorrect, the indicator light and alarm sound may be disabled, and the device may be disconnected from the smartphone app. Please charge it in time.



Operation Instructions

- Before using this device, please make sure that you have read the IMPORTANT SAFETY INFORMATION in this manual and that you will strictly observe the following warnings during use.

- Make sure that the distance between the probe and the charging case does not exceed 6m(19.68ft) and that there are no metal objects in between for a stable connection.

1. Push the top cover on the charging case to take out the probe, and use non-corrosive detergents to clean it and wipe it dry.

2. To connect for the first time, please press the button on the charging case. Once the indicator light shows green, you can proceed with the following steps to start the connection. (If the indicator light shows red or yellow, please use the supplied charging cable to charge the device.)

3. Prepare a smartphone running iOS12 (or higher) or Android 7.1 (or higher) to download the INKBIRD app and complete the connection (referring to the section 7 App Installation & Connection).

4. Select the type of the food you are going to cook and set your taste preferences in the app, then insert the probe into the center of the food, making sure you go beyond the safe cooking line of the probe.

5. The charging case has a function of Bluetooth signal repeater. Place the charging case as close to the probe as possible, preferably within 6 meters, and make sure there are no metal objects and obstacles in between. Do not

place it on an operating oven, stove, or other hot surface.

6. When the internal temperature of the food reaches the set point, the smartphone app and the thermometer will simultaneously remind you that it is time to enjoy these delicious foods. (To stop the alarm, you can use the app or press the button on the charging case.)

NOTE: When the cooking temperature exceeds the probe's temperature range, or when the food needs to be cooked directly on hot charcoal or flame, please do not use the probe or stop using it immediately and cool it down in time. After cooking, do not touch the hot probe immediately and wait sufficient time for the probe to cool down. If it is necessary to touch the probe, please use a tool with enough heat insulation to avoid scalding.



APP Installation & Connection



7.1 INKBIRD APP



Search the INKBIRD App from Google Play or App Store to get it for free, or you can scan the QR code to download it directly.

NOTE:

1. Your iOS devices must be running iOS 12.0 or above to download the app smoothly.
2. Your Android devices must be running Android 7.1 or above to download the app smoothly.
3. APP Location Permission Requirement: We need to obtain your location information to discover and add nearby devices. INKBIRD promises to keep your location

information strictly confidential. And your location information will only be used for the location function of the App and will not be collected, used, or disclosed to any third party. Your privacy is very important to us. We will abide by relevant laws and regulations and take reasonable security measures to protect your information security.

● 7.2 Registration

Step1: Registering an account is necessary before using the INKBIRD app for the first time.

Step2: Open the app, select your Country/Region, and a verification code will be sent to you.

Step3: Enter the verification code to confirm your identity, and the registration is complete.

● 7.3 How to Connect

1. Place the probe back into the charging case to fully charge it. (The indicator light on the charging case will flash green and go out in about 25 minutes, the probe is fully charged.)
2. Take out the probe and press the button on the charging case. The indicator light on the charging case will show green.
3. Open the INKBIRD app, click on the "+" in the upper right corner to find this product, and follow the app instructions to complete the connection.

NOTE: Make sure that the location permission is enabled and place the device as close to your smartphone as possible.



Cleaning and Maintenance

1. After use, please use non-corrosive detergents to clean the probe. Wipe it dry, put it back into the charging case, and store the whole unit in a cool, dry place where keeps children away.
2. If you are not going to use this product for a long time, please place the probe in the charging case and keep the device battery at about 50% before storage, to prevent the battery from entering a deep discharge state and causing the product to fail to charge.

3. Please do not store this product under direct sunlight or in an environment with high temperature or below 0°C, or in an environment with high humidity, as this may cause damage to the probe or your property.

4. Please note that the charging case is not waterproof and do not rinse or immerse it with water. If it is necessary to clean it, use a slightly damp cloth to wipe it and be careful not to let water infiltrate into it as this may cause product damage.



Important Notes/Warnings

1. This product is not suitable for use in microwave ovens or pressure cookers.

2. When in use, make sure the probe is inserted in the center of the food and above the safe cooking line, avoiding hard bones.

3. Please do not use the probe in a cooking environment with a temperature higher than 300°C (572°F) or lower than -10°C (14°F), and do not cook directly on the fire, which may damage the probe battery.

4. When in use, please keep the charging case away from fire and heat sources and direct sunlight.

5. Please do not touch the probe with bare hands during or after cooking. If it is necessary to touch the probe, please wear a pair of gloves with sufficient heat insulation to avoid scalding.

6. Please do not expose the probe directly to fire or burning charcoal. If the probe falls out of the food, please stop heating immediately and wait for it to cool down before taking it out.

7. The probe is waterproof, but do not clean it with corrosive detergents. The charging case is not waterproof, so please do not use it in high humidity environments such as bathrooms and gardens.

8. This product is designed for barbecuing and cooking. Any other use is not recommended.

Issues	Possible Solutions
My probe readouts are inaccurate?	<ol style="list-style-type: none"> 1. You can calibrate the temperature to what you think is correct using the app. 2. Please check whether the current temperature exceeds or has once exceeded the probe measurement range, causing damage to the probe. 3. Please do not immerse the probe in water for a long time. And this probe is only designed for food, not for any other purpose.
What if my device cannot connect to Bluetooth?	<ol style="list-style-type: none"> 1. Make sure that Bluetooth on your smartphone or tablet is turned on, that the device has sufficient power, and that the probe is taken out. 2. Make sure that the positioning function on your smartphone is enabled and that the application is allowed to get location information. 3. Make sure that the distance between the probe and the charging case is not more than 6 meters (19.68ft) and that your smartphone or tablet is as close as possible to the charging case. We recommend keeping the device away from metal or obstacles 4. Restart the device, re-open the phone app, and repeat the pairing steps. 5. Turn off other Bluetooth devices in the connection range or disable their Bluetooth functions.
Why can't I charge the device?	<ol style="list-style-type: none"> 1. The probe can only be charged by the charging case. 2. Please use the supplied charging cable to charge the charging case. If you need to use another charging cable, please use one with a 5V 1A type-C interface.

11 **FCC Requirement**

Changes or modifications not expressly approved by the party responsible for compliance could void the user's authority to operate the equipment. This device complies with Part 15 of the FCC Rules. Operation is subject to the following two conditions:

1. this device may not cause harmful interference, and
2. this device must accept any interference received, including interference that may cause undesired operation.

NOTE: This equipment has been tested and found to comply with the limits for a Class B digital device, pursuant to Part 15 of the FCC Rules. These limits are designed to provide reasonable protection against harmful interference in a residential installation. This equipment generates, uses, and can radiate radio frequency energy, and if not installed and used in accordance with the instructions, may cause harmful interference to radio communications. However, there is no guarantee that interference will not occur in a particular installation. If this equipment does cause harmful interference to radio or television reception, which can be determined by turning the equipment off and on, the user is encouraged to try to correct the interference by one or more of the following measures:

- Reorient or relocate the receiving antenna.
- Increase the separation between the equipment and receiver.
- Connect the equipment into an outlet on a circuit different from that to which the receiver is connected.
- Consult the dealer or an experienced radio/TV technician for help.

This equipment complies with FCC radiation exposure limits set forth for an uncontrolled environment. This equipment should be installed and operated with a minimum distance of 20cm between the radiator & your body. This transmitter must not be co-located or operating in conjunction with any other antenna or transmitter.

WIRELESS BBQ THERMOMETER Model: INT-11P-B/INT-11S-B	
Charging Case: 11P-B	Wireless Probe: INT-11P
FCC ID: 2AYZD-11P-B	FCC ID: 2AYZD-INT-11P
IC: 30368-11PB	IC: 30368-INT11P

Declaration of Conformity

Hereby, the manufacturer declares that this product with the basic requirements and applicable regulations of the Radio Equipment Directive 2014/53/EU.



12 IC Warning

This device contains licence-exempt transmitter(s)/receiver(s) that comply with Innovation, Science and Economic Development Canada's licence-exempt RSS(s). Operation is subject to the following two conditions:

- (1) This device may not cause interference.
- (2) This device must accept any interference, including interference that may cause undesired operation of the device.

L'émetteur/récepteur exempt de licence contenu dans le présent appareil est conforme aux CNR d'Innovation, Sciences et Développement économique Canada applicables aux appareils radio exempts de licence. L'exploitation est autorisée aux deux conditions suivantes :

- 1) L'appareil ne doit pas produire de brouillage;
- 2) L'appareil doit accepter tout brouillage radioélectrique subi, même si le brouillage est susceptible d'en compromettre le fonctionnement.

Shenzhen Inkbird Technology Co.,Ltd.

support@inkbird.com

Consignor: Shenzhen Inkbird Technology Co., Ltd.

Office Address: Room 1803, Guowei Building, No.68 Guowei Road,
Xianhu Community, Liantang, Luohu District, Shenzhen, China

Manufacturer: Shenzhen Inkbird Technology Co., Ltd.

Factory Address: 5th and 6th Floor, Building 138, No. 71, Yiqing Road,
Xianhu Community, Liantang Street, Luohu District, Shenzhen,
Guangdong, China



V1.0

MADE IN CHINA

DESIGNED BY INKBIRD