

# *Firelex*



## **IBS-P01R& IBS-M2S**

**Pool Thermomter  
and Gateway Set**

# CONTENTS

<b>01</b> <i>Overview</i> .....	01
<b>02</b> <i>Technical Specifications</i> .....	01
<b>03</b> <i>Product Diagram</i> .....	02
<b>04</b> <i>Operation Button Definitions</i> .....	04
<b>05</b> <i>Installation Instructions</i> .....	06
<b>06</b> <i>Add Sub-Dvices</i> .....	09
<b>07</b> <i>APP Installation &amp; Connection</i> .....	11
<b>08</b> <i>Important Notes/Warnings</i> .....	13
<b>09</b> <i>Troubleshooting Guide</i> .....	14
<b>10</b> <i>FCC Requirement</i> .....	16
<b>11</b> <i>IC Warning</i> .....	18

## 1. Overview

The IBS-P01R pool thermometer, paired with the IBS-M2S Wi-Fi gateway, sends temperature data directly to the smartphone app, enabling remote monitoring. Easy to install and long-lasting, it allows you to control water temperatures from anywhere at any time, making pool management more convenient and effortless.

## 2. Technical Specifications

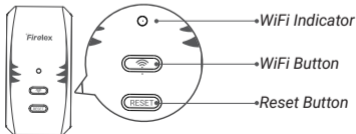
<b>IBS-M2S WiFi Gateway (receiver)</b>	
<b>Max transmission distance</b>	<i>980 feet without interference (interference may limit transmission)</i>
<b>Maximum number of connected devices</b>	<i>Up to 9 pool thermometers</i>
<b>Compatible network</b>	<i>2.4GHz WiFi</i>
<b>Input voltage</b>	<i>AC 100~240V 50/60 Hz</i>

## IBS-P01R Wireless Pool Thermometer

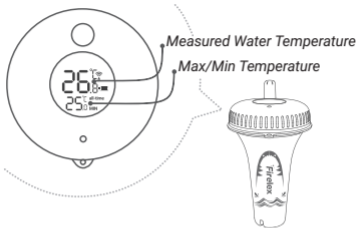
Battery	2*AAA 1.5V
Temperature measurement range	-40°C~70°C(-40°F~158°F)
Temperature measurement accuracy	±1°C(±1.8°F)
Temperature display accuracy	0.1°C (0.1°F)
Temperature sampling period	10 seconds
Waterproof rating	IPX7
Warranty period	1year

### 3.Product Diagram

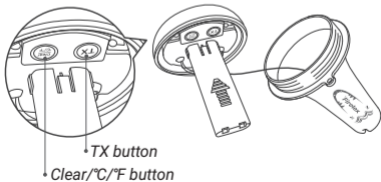
#### ● IBS-M2S WiFi Gateway



## ● IBS-P01R Wireless Pool



Twist off the lid of the thermometer as shown below, all the buttons of the pool thermometer are designed inside.



## 4. Operation Button Definitions

### IBS-M2S WiFi gateway(receiver)

<b>WiFi button</b>	<p><i>Press and hold the WiFi button for 5 seconds to reset the WiFi pairing. Once reset, follow the pairing steps to reconnect to the WiFi network.</i></p> <p><i>Once you have successfully connected to WiFi, the gateway's WiFi indicator will remain lit. At this point, press the WiFi button briefly to turn off the indicator.</i></p>
--------------------	--

<b>RESET button</b>	<p><i>Press and hold the RESET button for 5 seconds to unbind all sensors.</i></p> <p><i>After unbinding, follow the connection steps to rebind to each sensor.</i></p>
---------------------	---

**Note:** *When the WiFi gateway buzzer sounds an alert, press any button on the gateway to silence it. You can also stop the buzzer by viewing the alert information via the app. You can disable the buzzer in the app settings.*

## IBS-P01R wireless pool thermometer

**Clear/°C/°F  
button**

*Press the button to clear the historical temperature data. The device will record the new maximum and minimum temperature after clearing the history data.*

*Press and hold the button for 5 seconds to switch the temperature unit between °C and °F.*

**TX button**

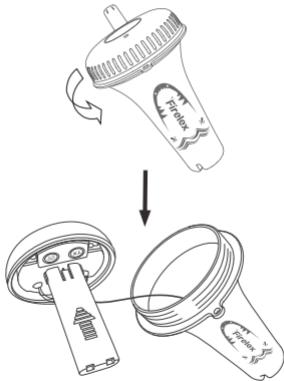
*Press the button to send temperature data to the receiver manually, the blue light of the pool thermometer will flash once when the transmission is successful.*

**Note:** *Please put the pool thermometer as close as to the receiver during synchronization.*

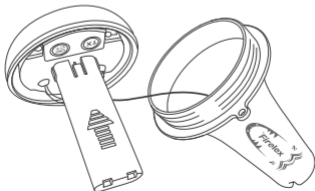
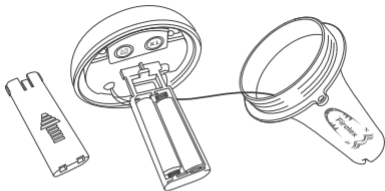
## 5. Installation Instructions

### ● Battery Installation

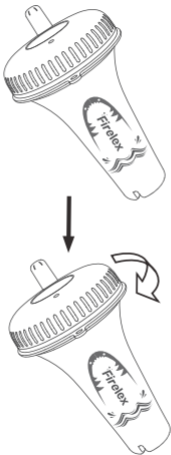
- a. Unscrew the lid of the pool thermometer as shown below.



b. Remove the battery cover, install 2 AAA batteries, and put the cover back.



- c. Make sure the silicone waterproof ring is well placed, then close and tighten the lid of the pool thermometer.



**Notice:** Use only new alkaline batteries. Do not mix new and old batteries. Do not use rechargeable batteries. Do not use standard (carbon-zinc) batteries.

## 6.Add Sub-Dvices

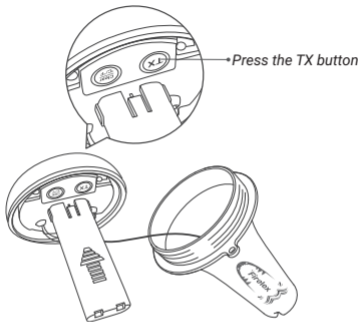
- a. Firstly, connect the WiFi gateway to a power source and ensure the mobile APP is connected. See section 7 for app connection instructions.



• *The Wi-Fi indicator remains lit.*

- b. Secondly, make sure that the pool thermometer (transmitter) is turned on, and place the thermometer as close to the WiFi gateway and indoor monitor (Receiver) as possible. Wait 2 minutes for the devices to pair automatically, or

unscrew the lid of the pool thermometer and press the TX button to pair immediately.



- c. Once the pool thermometer has been successfully paired with the receiver, you can view temperature data via the app.

**Note:** If you fail to add sub-devices, please restart the pool thermometer (transmitter), and repeat steps b~c to add the device.

## 7.APP Installation & Connection

7.1 Search for the INKBIRD App from Google Play or App Store to get it for free, or you can scan the QR code below to download it directly.



### NOTE

1. Your iOS devices must be running iOS 12.0 or above to download the app smoothly.
2. Your android devices must be running android 7.1 or above to download the app smoothly.
- 3.The device supports a 2.4GHz Wi-Fi router only.
4. APP Location Permission Requirement: We need to obtain your location information to discover and add nearby devices. INKBIRD promises to keep your location information

strictly confidential. And your location information will only be used for the location function of the App and will not be collected, used, or disclosed to any third party. Your privacy is very important to us. We will abide by relevant laws and regulations and take reasonable security measures to protect your information security.

## ***7.2 Registration***

- Step1: Registering an account is necessary before using the INKBIRD app for the first time.
- Step2: Open the app, select your Country/Region, and a verification code will be sent to you.
- Step3: Enter the verification code to confirm your identity, and the registration is complete.

## ***7.3 How to connect***

- Open the INKBIRD app and Click “+” on the top right corner to add a device. Then, follow the app instructions to complete the connection. Be careful to put the device as close as possible to the smartphone and router during the connection process.

## 8. Important Notes/Warnings

- a. Please do not disassemble the product if you are not a professional.
- b. Be sure that the sensor is not covered with dust as dust may lead to inaccurate measurements.
- c. Do not use alcohol to clean the sensor.
- d. Do not dispose the product in a fire as it may explode. Please observe local regulations for proper disposal of discarded electronic products.
- e. Remove from pool when not in use or while cleaning the pool so unit is not damaged by skimmers or other devices.
- f. The thermometer can measure temperatures between  $-40^{\circ}\text{C}$  and  $70^{\circ}\text{C}$  ( $-40^{\circ}\text{F}$  and  $158^{\circ}\text{F}$ ). It is not suitable for use in harsh environments below  $-40^{\circ}\text{C}$ / $-40^{\circ}\text{F}$  and above  $70^{\circ}\text{C}$ / $158^{\circ}\text{F}$ .

## 9. Troubleshooting Guide

Issues	Possible Solutions
<b>The gateway can not connect to the network</b>	<ol style="list-style-type: none"><li data-bbox="288 277 947 392">1. Make sure the 2.4GHz WiFi signal is stable, and place the WiFi gateway as close to the router as possible.</li><li data-bbox="288 409 947 523">2. Make sure there are as few barriers as possible between the WiFi gateway and the router.</li><li data-bbox="288 540 947 689">3. Enable Bluetooth and Location Services. Allow the app to access your location and grant it permission to access your local network (for iOS devices).</li></ol>
<b>Condensation formed inside the pool thermometer</b>	<ol style="list-style-type: none"><li data-bbox="288 725 947 839">1. When installing the battery, keep your hands dry to prevent excess moisture from entering.</li><li data-bbox="288 856 947 992">2. Make sure that the lid is fully tightened during installation. If it still does not work properly afterwards, please contact Customer Services.</li><li data-bbox="288 1009 947 1158">3. If moisture is detected, wipe the interior dry, remove the battery, and leave it to air dry in a dry environment before installing a new battery.</li></ol>

Issues	Possible Solutions
<b>Wrong temperature readings</b>	<ol style="list-style-type: none"> <li data-bbox="308 181 837 221">1. Check that the equipment is intact.</li> <li data-bbox="308 234 913 305">2. Please ensure the thermometer is not placed where hot and cold water alternate.</li> <li data-bbox="308 318 930 423">3. Place the transmitter indoors to carry out the test. If the readings remain inaccurate, please contact Customer Services.</li> </ol>
<b>No display on the pool thermometer's screen</b>	<ol style="list-style-type: none"> <li data-bbox="308 457 868 497">1. Check that the equipment is intact.</li> <li data-bbox="308 510 924 647">2. The issue may be caused by a dead or incorrectly positioned battery. Replace the battery and ensure that it is installed in the correct direction.</li> </ol>
<b>Rusty stains inside the pool thermometer</b>	<ol style="list-style-type: none"> <li data-bbox="308 681 888 752">1. Keep your hands dry when installing the battery.</li> <li data-bbox="308 765 924 910">2. Please remove any rust. Before installing the new battery, leave the pool thermometer indoors for a while to allow any moisture to evaporate naturally.</li> </ol>
<b>Receiver disconnects/loses connection to pool thermometer</b>	<ol style="list-style-type: none"> <li data-bbox="308 963 913 1081">1. Place the pool thermometer near the receiver, then press the TX button on the pool thermometer to pair it again.</li> <li data-bbox="308 1094 681 1134">2. Reinstall the batteries.</li> </ol>

## 10.FCC Requirement

- Changes or modifications not expressly approved by the party responsible for compliance could void the user's authority to operate the equipment. This device complies with Part 15 of the FCC Rules. Operation is subject to the following two conditions:

(1) this device may not cause harmful interference, and

(2) this device must accept any interference received, including interference that may cause undesired operation.

**Note:** This equipment has been tested and found to comply with the limits for a Class B digital device, pursuant to Part 15 of the FCC Rules. These limits are designed to provide reasonable protection against harmful interference in a residential installation. This equipment generates, uses, and can radiate radio frequency energy, and if not installed and used in accordance with the instructions, may cause harmful interference to radio communications.

However, there is no guarantee that interference will not occur in a particular installation. If this equipment does cause harmful interference to radio or television reception, which can be determined by turning the equipment off and on, the user is encouraged to try to correct the interference by one or more of the following measures:

- Reorient or relocate the receiving antenna.
- Increase the separation between the equipment and receiver.
- Connect the equipment into an outlet on a circuit different from that to which the receiver is connected.
- Consult the dealer or an experienced radio/TV technician for help. This equipment complies with FCC radiation exposure limits set forth for an uncontrolled environment. This equipment should be installed and operated with a minimum distance of 20cm between the radiator & your body. This transmitter must not be co-located or operating in conjunction with any other antenna or transmitter.

## 11.IC Warning

- This device contains licence-exempt transmitter (s) that comply with Innovation, Science and Economic Development Canada's licence-exempt RSS(s). Operation is subject to the following two conditions:

(1) This device may not cause interference.

(2) This device must accept any interference, including interference that may cause undesired operation of the device.

- This device complies with Industry Canada license-exempt RSS standard(s). Operation is subject to the following two conditions:

(1) this device may not cause interference, and

(2) this device must accept any interference including interference that may cause undesired operation of the device.

- Cet appareil contient un ou des émetteurs exempts de licence conformes aux RSS exempts de licence d'Innovation, Sciences et Développement économique Canada. Le fonctionnement

est soumis aux deux conditions suivantes :

(1) Cet appareil ne doit pas causer d'interférences.

(2) Cet appareil doit accepter toutes les interférences, y compris les interférences susceptibles d'entraîner un fonctionnement

● Cet appareil satisfait aux normes RSS de matériel radio exempté de licence par le Gouvernement du Canada. Son fonctionnement est sujet aux deux conditions suivantes :

(1) Il ne doit pas causer de brouillage préjudiciable et

(2) doit accepter tout brouillage reçu, y compris tout brouillage qui pourrait nuire à son fonctionnement.

● The device has been evaluated to meet general RF exposure requirement.

L'appareil a été évalué pour répondre aux exigences générales d'exposition aux RF.

# Shenzhen Xingkong Chuanglian E-Commerce Co., Ltd

support@inkbird.com

**Distributor address:** Room 403, Building 138, No. 71  
Yiqing Road, Xianhu Community, Liantang Subdistrict,  
Luohu District, Shenzhen, Guangdong Province, China.  
518000, CN

**Manufacturer:** Shenzhen Inkbird Technology Co., Ltd.

**Manufacturer Address:** 5th and 6th Floor, Building  
138, No.71, Yiqing Road, Xianhu Community, Liantang  
Street, Luohu District, Shenzhen, Guangdong, China



V1.0

MADE IN CHINA  
DESIGNED BY FIRELEX